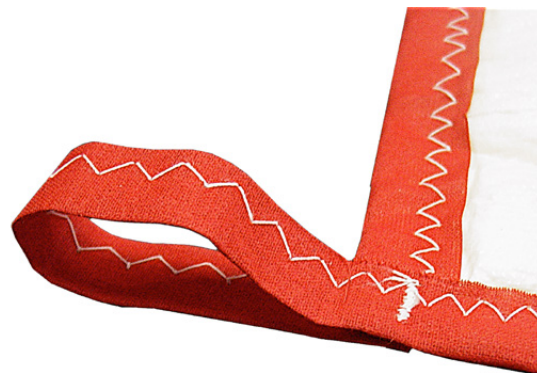


# Tri-Sac™ Oil Mist Fiberglass Bag Filters

## FEATURES

- Standard efficiencies 90 - 95% MERV 15
- Trusted, sealed span-stitch pocket construction
- Non-woven lining for superior performance
- Trusted performance
- 16 standard sizes—special sizes also available
- Media backing provides durability
- Peripheral edge of each pocket sealed with polypropylene fabric strip
- Multiple header options
- Gasketing available
- Engineered for demanding applications



## HIGH EFFICIENCY FIBERGLASS BAG FILTERS

Tri-Sac Oil Mist are extended surface filters that are engineered to work in oil mist removal applications.

Tri-Sac Oil Mist is manufactured with a non-woven lining and polypropylene strips on the peripheral edges of each pocket for added strength and durability.

The pockets feature loops for correct installation in oil mist removal equipment. And a high, MERV 15 efficiency is provided as standard.

All this adds up to a filter that can deliver safety for your work environment. Tri-Sac is your choice for oil mist removal.

# Tri-Sac™ Oil Mist

## Technical Specification

### SPECIFICATIONS

<b>Product</b>	<b>Tri-Sac Oil Mist</b>
<b>Efficiency</b> (ASHRAE 52.2)	MERV 15
<b>Temperature limit</b> (maximum)	175 – 200 °F (79 – 93 °C)
<b>Final resistance</b>	1.50 "W.G. (373 Pa)

Meets ANSI/UL-900 requirements

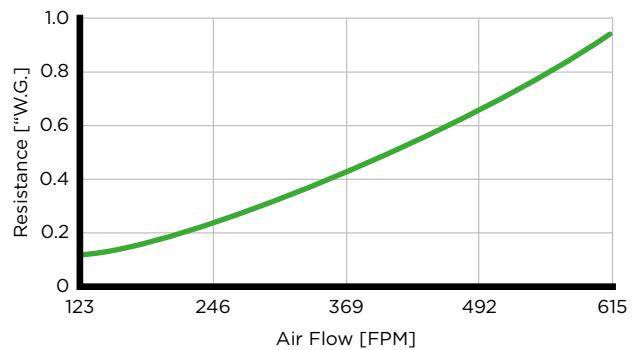
### SQUARE FEET OF MEDIA

Dimensions	No. Pockets	Media Area
18 x 18 x 13" 457 x 457 x 330 mm	5	16 sq. ft. 1.5 m <sup>2</sup>
18.5 x 18.5 x 18" 470 x 470 x 457 mm	5	23 sq. ft. 2.1 m <sup>2</sup>
18.313 x 18.313 x 15" 465 x 465 x 381 mm	5	19 sq. ft. 1.8 m <sup>2</sup>
22 x 22 x 18" 559 x 559 x 457 mm	10	55 sq. ft. 5.1 m <sup>2</sup>
24.75 x 22.625 x 19.5" 629 x 575 x 495 mm	10	61 sq. ft. 5.7 m <sup>2</sup>
23.313 x 23.313 x 30" 592 x 592 x 762 mm	10	97 sq. ft. 9.0 m <sup>2</sup>
23.313 x 23.313 x 36" 592 x 592 x 914 mm	10	117 sq. ft. 10.9 m <sup>2</sup>
23.313 x 23.313 x 36" 592 x 592 x 914 mm	6	70 sq. ft. 6.5 m <sup>2</sup>

Tri-Dim Filter Corporation is committed to continual product development – all descriptions, specifications and performance data are subject to change without notice. Tri-Dim products are manufactured to exacting criteria – there can be a ±5% variance in filter performance.

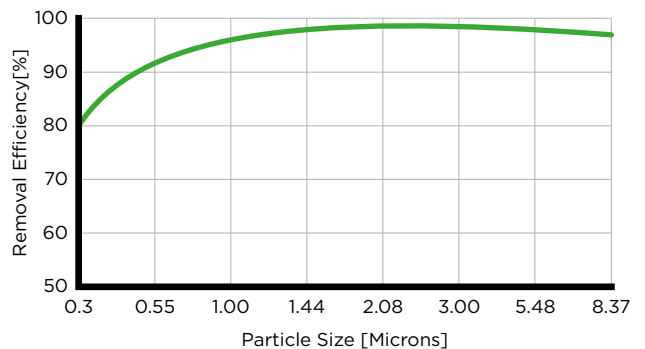
### INITIAL RESISTANCE

24 x 24 x 36" 10-Pocket



### INITIAL EFFICIENCY

vs. Particle Size



### LOCAL REPRESENTATIVE