

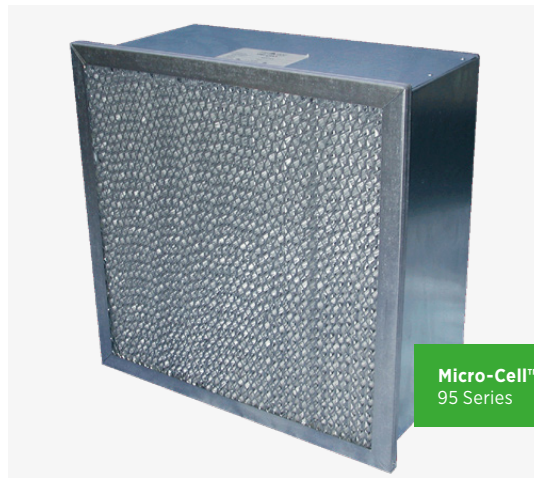
Micro-Cell
Extended surface,
high-efficiency air
filters

Micro-Cell

Extended surface filters

FEATURES

- Efficiency 95% @ 0.3 μm
- Retrofit in most housings or holding frames
- Available in a variety of frame materials and configurations
- Microfiber media
- Rolled and tapered aluminum separators
- Standard and high capacity versions available
- Faceguards optional
- Reduces airborne bacteria



TYPICAL APPLICATIONS

- Healthcare
- Biotech
- Pharmaceutical
- Food processing
- Precision manufacturing
- Biomedical
- Universities
- Laboratories
- Industrial applications
- Photo processing
- Mushroom growers
- Research facilities

MERV 16 HIGH EFFICIENCY, EXTENDED SURFACE AIR FILTER

Tri-Dim's Micro-Cell™ series of filters are ideal for use in critical applications that require clean air, but not require HEPA or ULPA levels of efficiency. Micro-Cell is also suited for applications that cannot handle the additional cost, air flow restrictions or major modifications associated with the use of a HEPA filter. The Micro-Cell series offers a minimal removal efficiency of 95% on particles 0.3 microns in size, and fills the gap between 90 - 95% ASHRAE filters and 99.97% HEPA filters.

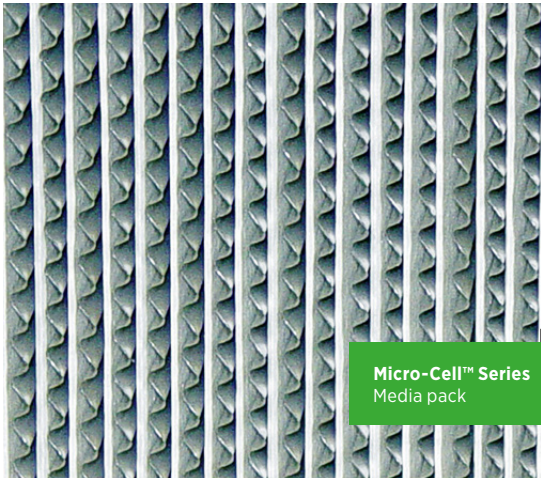
The Micro-Cell series features an easy and convenient retrofit into almost all ASHRAE and HEPA housings.

Micro-Cell is available in three models - Micro-Cell 95, Micro-Cell XL and Micro-Cell XL MAX - several styles and with a variety of frame materials.

Micro-Cell 95 Series offers the same construction as our Tri-Cell™ ASHRAE series - hot melt sealant, metal or MDF high-density particleboard frame materials, and single, double (metal only) or no header (MDF particleboard only). Micro-Cell 95 is also available in six and 12 inch depths.

Micro-Cell

Extended surface filters



Micro-Cell XL offers the same construction as our Tri-Pure™ Separator Style HEPA filters – polyurethane sealant and a metal frame with Z-body construction frame. This style offers the same assurance of quality construction as HEPA filters. Micro-Cell XL is also available with a MDF high-density particleboard frame.

The Micro-Cell XL series is also offered in a high capacity version – the Micro-Cell XL MAX. This product delivers all the same features and benefits of Micro-Cell XL with the added feature of a rated airflow of 500 FPM (2.5 m/sec) and an initial resistance of 0.80 "W.G. (199 Pa).

The Micro-Cell series utilizes glass microfibers that are pleated into media packs using aluminum separators to offer protection, stability and uniformity to the media pack. Tri-Dim's separators are rolled and tapered to offer reduced risk of personal injury and diminish the risk of damaging the media pack.

The Micro-Cell series media pack utilizes microfiber media that offers consistent efficiency, real world results vs. laboratory results, negligible fiber shed and resistance to moisture.

Tri-Dim also offers optional faceguards and gasketing to match your application needs. Faceguards are available either on the upstream face, downstream face or on both faces of the filter. Faceguards increase the stability of the filter and offer valuable protection to the media pack.

Gasketing is also available and recommended on all Micro-Cell series filters to ensure that no unfiltered air will bypass around the filter.

Micro-Cell 95 filters are manufactured in our quality-controlled facility to ensure you receive only the highest quality product available.

Tri-Dim is a full line filter manufacturer able to provide the full range of HVAC and cleanroom filtration products and services to your company. Tri-Dim also provides local service through a network of dedicated, factory-trained sales professionals that can work with you on your filtration needs.

Contact your local sales professional at 1-800-458-9835 for a free, no obligation filter and IAQ assessment.

Micro-Cell Specifications

TECHNICAL SPECIFICATIONS

| | MICRO-CELL 95 | MICRO-CELL XL | MICRO-CELL XL MAX |
|---------------------------------|---|--|---|
| Rec. air flow/resistance | 12" deep @ 250 FPM = 0.46 "W.G. (1.25 m/sec = 114 Pa) 6" deep @ 125 FPM = 0.46 "W.G. (0.625 m/sec = 114 Pa) | 12" deep @ 250 FPM = 0.46 "W.G. (1.25 m/sec = 114 Pa) 6" deep @ 125 FPM = 0.40 "W.G. (0.625 m/sec = 100 Pa) | 12" deep @ 500 FPM = 0.80 "W.G. (2.5 m/sec = 199 Pa) |
| Temperature limit | 200 °F (93 °C) | 250 °F (121 °C) | 250 °F (121 °C) |
| Frame construction | Galvanized, MDF high-density particleboard, fire retardant particleboard. <i>Other materials available upon request.</i> | Galvanneal, MDF high-density particleboard. <i>Other materials available upon request.</i> | Galvanneal, MDF high-density particleboard. <i>Other materials available upon request.</i> |
| Sealant | Hot melt | Polyurethane | Polyurethane |
| Media | Glass microfiber | Glass microfiber | Glass microfiber |
| Separators | Aluminum | Aluminum | Aluminum |

Tri-Dim Filter Corporation is committed to continual product development - all descriptions, specifications and performance data are subject to change without notice. Tri-Dim products are manufactured to exacting criteria - there can be a ±5% variance in filter performance.

LOCAL REPRESENTATIVE