

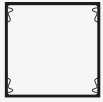
Nanoclass DTM Select



Leadership in Filtration

MANN+
HUMMEL

Nanoclass DTM Select



Filter Housing



Entry-level product



Suitable for cleanrooms



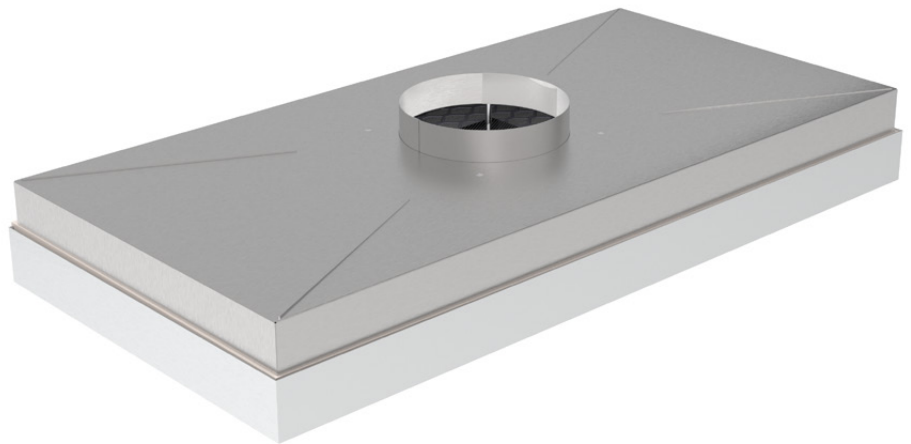
High efficiency



ATEX rated



Filter class to EN 1822



KEY FACTS

- Developed specifically as a final filtration solution for cleanrooms
- Factory-sealed filter unit ready to install
- Individually tested and certified prior to despatch
- Compact design with minimal space requirements
- Interchangeable with existing filter units

DESIGN

Nanoclass DTM Select combines ease of use with flexibility for efficient and assured contamination control in the cleanroom. The terminal module can be equipped with different HEPA or ULPA filters, and easily integrates into most common ceiling-grid systems.

APPLICATIONS

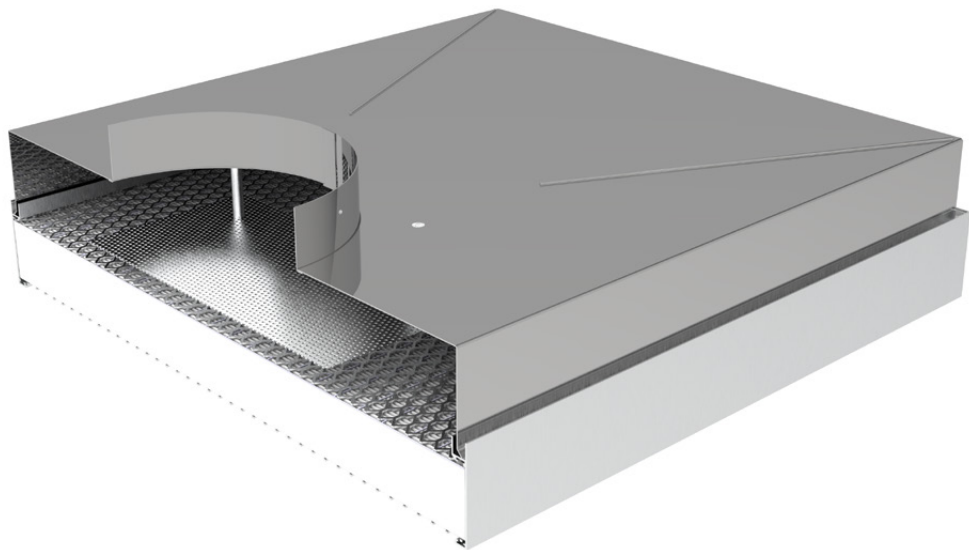
Nanoclass DTM Select has been developed as a final filtration solution and is ideal for use in hospitals, laboratories, the food, beverage, and pharmaceutical industries, and other cleanroom applications.

The highest possible standards and safety

Nanoclass DTM Select is equipped with high quality HEPA or ULPA filter elements of classes H13 - U17 according to EN 1822/ISO 29463.

To ensure high efficiencies, zero leakage and smooth commissioning, every MANN+HUMMEL HEPA and ULPA filter is factory tested according to all applicable standards and provided with an individual test report.

As an alternative to the traditional glass fiber media, ePTFE HEPA and ULPA filters with extremely low initial pressure drop performance can be specified as an option.



Technical Data

Efficiency Class EN 1822	Width mm	Height mm	Depth mm	Circular Inlet mm	Face Velocity m/s	Flow Rate m ³ /h	Initial Pressure Drop Pa
H13	305	610	150	150	0.45	300	110
H13	610	610	150	200	0.45	600	110
H13	610	915	150	250	0.45	900	110
H13	610	1220	150	250	0.45	1200	110
H13	1220	1220	150	300	0.45	2400	110
H14	305	610	150	150	0.45	300	120
H14	610	610	150	200	0.45	600	120
H14	610	915	150	250	0.45	900	120
H14	610	1220	150	250	0.45	1200	120
H14	1220	1220	150	300	0.45	2400	120
U15	305	610	150	150	0.45	300	135
U15	610	610	150	200	0.45	600	135
U15	610	915	150	250	0.45	900	135
U15	610	1220	150	250	0.45	1200	135
U15	1220	1220	150	300	0.45	2400	135

Flow rate \pm 15%. Operating temperature 70 °C, max. 90 °C.

Options

- Five standard sizes
- Custom dimensions
- Design optimized for homogeneous air distribution across the HEPA
- Filter classes from H13 to U17
- Glass fiber and ePTFE filter media
- Aerosol inlet and pressure drop test ports
- ATEX range
- Housing material in aluminium, zinc-coated steel, or stainless steel
- Custom configurations for higher air volumes
- High temperature resistance (120°C) version

We reserve the right to update, change or supplement the information provided in this document without prior notice.

0324 © MANN+HUMMEL